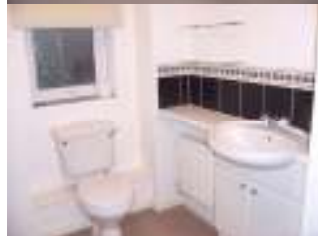


**AVAILABLE IMMEDIATELY TO RENT**  
**£550.00 pcm PART FURNISHED**



**Apartment, Waterfront, Barry**

Nearly New two bedroomed apartment on the Waterfront in Barry

**FEATURES**

- \* Unfurnished
- \* Ground Floor
- \* 2 Bedroom, 1 En-Suite
- \* Gas Central Heating
- \* Large UPVC Windows Throughout property
- \* Fitted Kitchen
- \* Property Alarm
- \* Panic Alarm

**ROOM SIZES**

Lounge 15'8 x 12'7  
Kitchen 10'11 x 8'10  
Bathroom 7'10 x 6'5  
Bedroom One 15'2 x 13'3  
En-Suite 5' x 6'  
Bedroom Two 10'1 x 9'3

**OUTSIDE**

Enclosed communal garden laid to lawn.

**0845 257 43 44**